

47. *STYLIDIUM TENELLUM* SWARTZ (STYLIDIACEAE),
A NEW RECORD FOR MAHARASHTRA STATE

(With a text-figure)

The genus *Stylidium* Sw. is represented in India by two species, namely *S. tenellum* Sw. and *S. kunthii* Wall. *S. kunthii* is confined to Eastern

India, whereas *S. tenellum* is reported from Uttar Pradesh (Babu 1977), Bihar and Orissa (Haines 1921-24), Madhya Pradesh (Mukherjee 1984 and

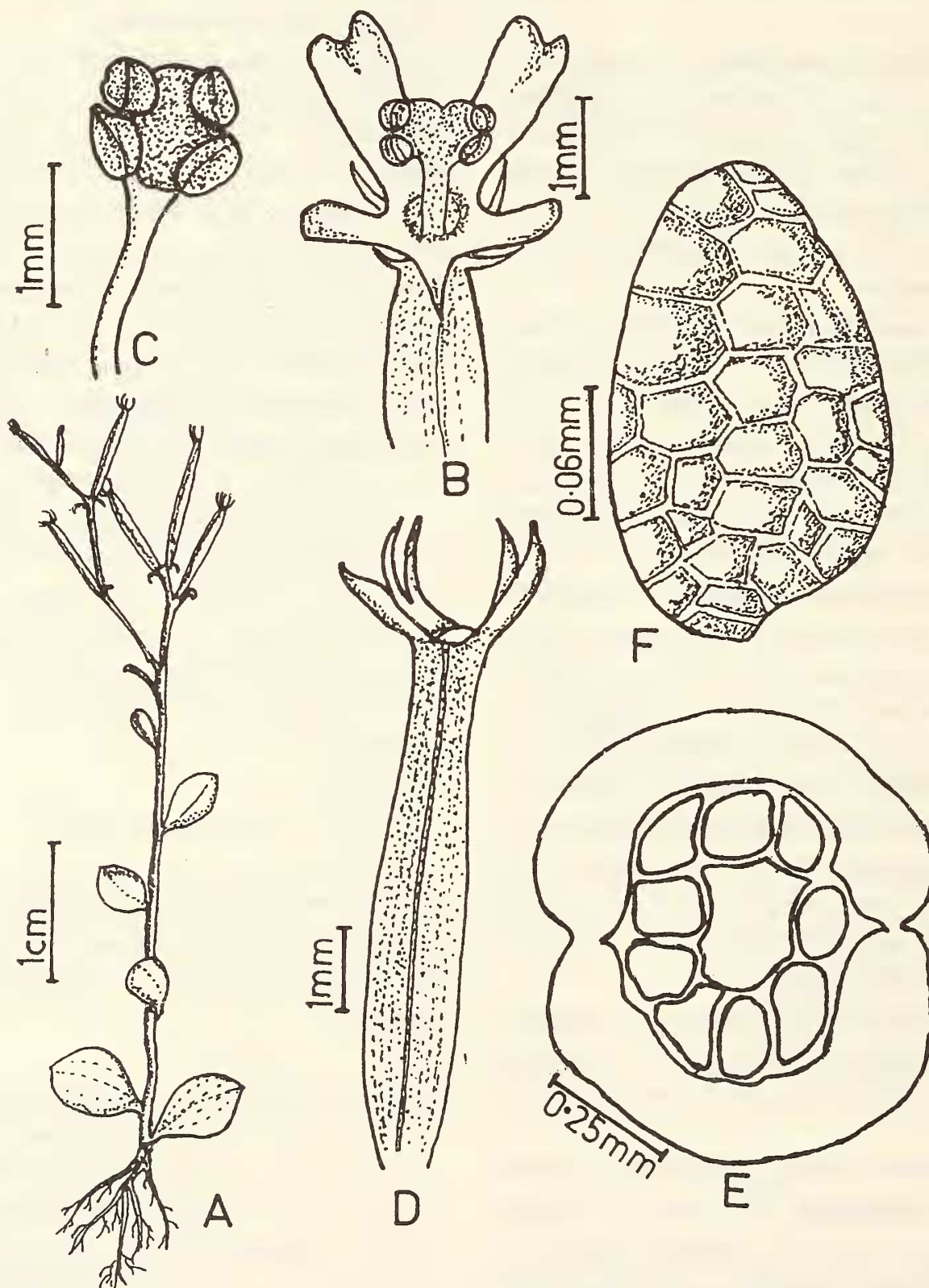


Fig. 1: *Stylidium tenellum* Sw., A. Twig, B. Flower, C. Gynostemium, D. Mature capsule, E. T.S. Capsule & F. Seed showing surface ornamentation

Verma *et. al* 1985) and Karnataka (Bhaskar and Kushalappa 1991). However, there is no record of its occurrence in Maharashtra State so far. The author is reporting for the first time the occurrence of *S. tenellum* Sw. from Maharashtra State.

During the survey of wetlands of Gondia district, Maharashtra State, the author collected *Stylidium tenellum* Sw. from Borkanhar locality of Amgaon tehsil.

The voucher specimen has been deposited in the herbarium, Department of Botany, Bhawabhuti Mahavidyalaya, Amgaon, Gondia district, Maharashtra.

The diagnostic characters, locality, field number and notes are given below.

Stylidium tenellum Sw. Ges. Naturf. far. Berlin 1:51, t.2, f. 3, 1807 (non R. Br. 1810); Clarke in Hook f., F.B.I. 3.420.1881; Haines, Botany of Bihar & Orissa 4: 499.1921-1924; Babu, Herb. Fl. Dehra Dun, 291, 1977; Mukherjee, Fl. Pachmarhi & Bori Reserve. 271.1994; Verma *et. al*, Fl. Raipur, Durg & Rajnandgaon. 207.1985; Bhaskar & Kushalappa, J. Bombay. nat. Hist. Soc. 88(3): 465.1991.

Annual, erect, glabrous, slender herb, up to 10 cm high, normally branched, branches filiform, stem dark purple or brown; leaves alternate, sessile, lanceolate-oblong or obovate-spathulate, *c.* 0.8 mm long, obtuse, entire, 3-nerved; basal ones in rosette, upper ones passing into bracts; flowers minute, sessile, 2-3 in cymes, zygomorphic, epigynous, rose-purple; sepals 5, linear, subequal, spreading, persistent in the

fruit; corolla bilabiate, purple or pink, lower three lobes minute, upper two spathulate, prominent and ray-like; corolla tube minute; stamens 2, filaments adnate to the style into an elongate geniculate column which is inclined to one side; anther lobes 4; stigma hairy; ovary inferior; capsule linear 10-12 mm long, pubescent, valves united at both ends; seeds minute, brown, angled.

Fl. and Fr.: October-January.

Ecology: Occasional, along the edges of tanks in open grassy places, found on sandy loam.

Specimen Examined: Borkanhar, Amgaon, Bhuskute 205, 19.xi.1998.

Associated Taxa: *Utricularia caerulea* Linn., *Lindernia ciliata* (Colsm.) Pennell, *Xyris pauciflora* Willd., *Diplacrum caricinum* R. Br. This taxon is easily mistaken at first sight for *Lindernia*, but may be distinguished by its peculiar gynostemium and inferior ovary.

ACKNOWLEDGEMENTS

I am thankful to the UGC for financial assistance and to Dr. M.K. Janarthanam, Goa for literature and identification. I also thank Mr. K.L. Mankar, Secretary, Bhawabhuti Shikshan Sanstha for encouragement and Mr. V.S. Chobisa, Principal, for facilities.

August 11, 2000

S.M. BHUSKUTE

*Department of Botany,
Bhawabhuti Mahavidyalaya, Amgaon,
Dist. Gondia 441 902, Maharashtra, India.*

REFERENCES

- BABU, C.R. (1977): Herbaceous Flora of Dehra Dun. CSIR, New Delhi.
- BHASKAR, V. & C.G. KUSHALAPPA (1991): *Stylidium tenellum* Swartz (Stylidiaceae) — A new record for South India. *J. Bombay nat. Hist. Soc.* 88 (3): 465-466.
- HAINES, H.H. (1921-24): Botany of Bihar and Orissa Part IV. London. Pp. 499.
- MUKHERJEE, A.K. (1984): Flora of Pachmarhi and Bori Reserve. Botanical Survey of India, Howrah. Pp. 271.
- VERMA, D.M., M.I. HANIF & R. SARAN (1985): Flora of Raipur, Durg and Rajnandgaon. Botanical Survey of India, Howrah. Pp. 207.